

Pahari Painting

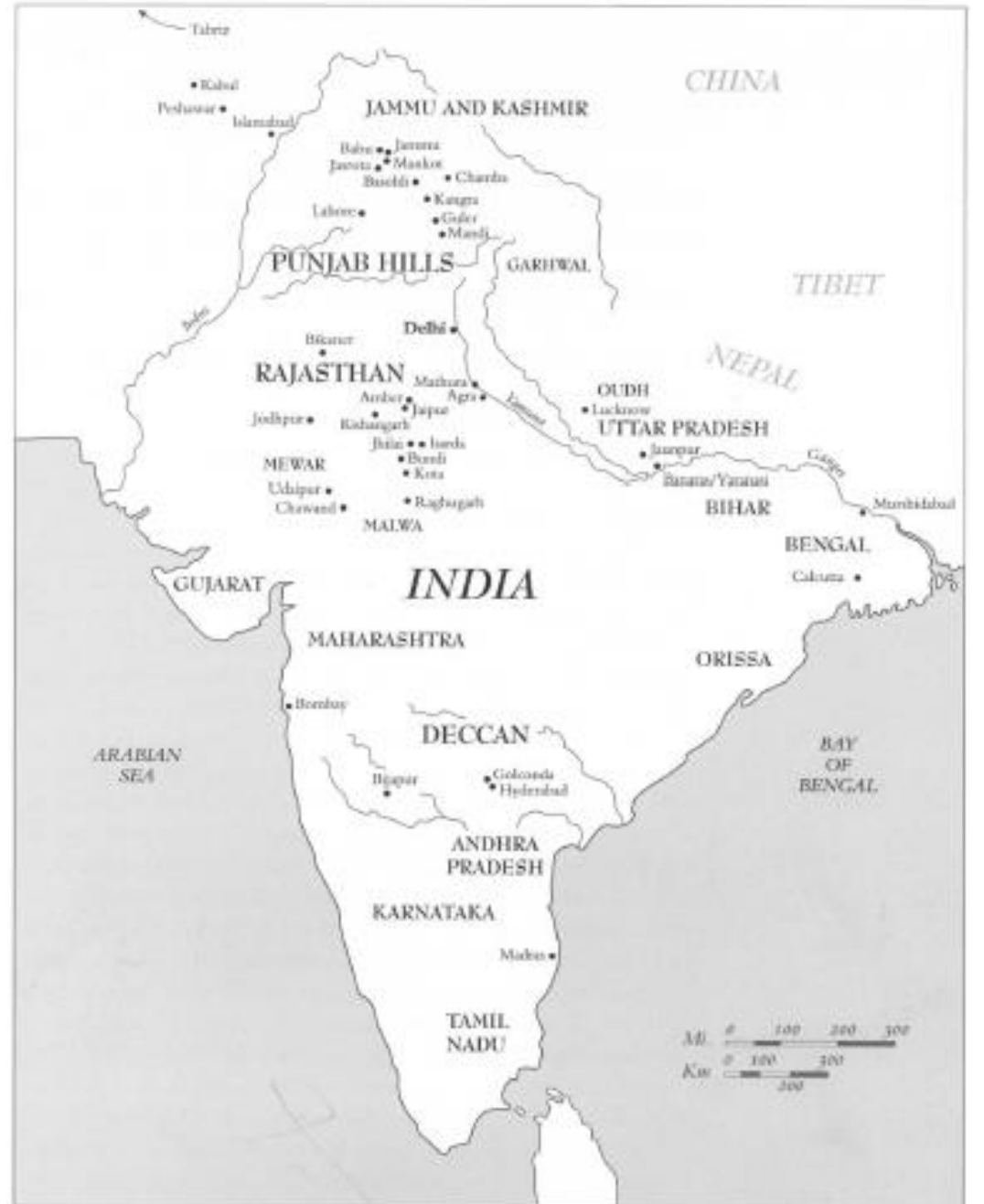
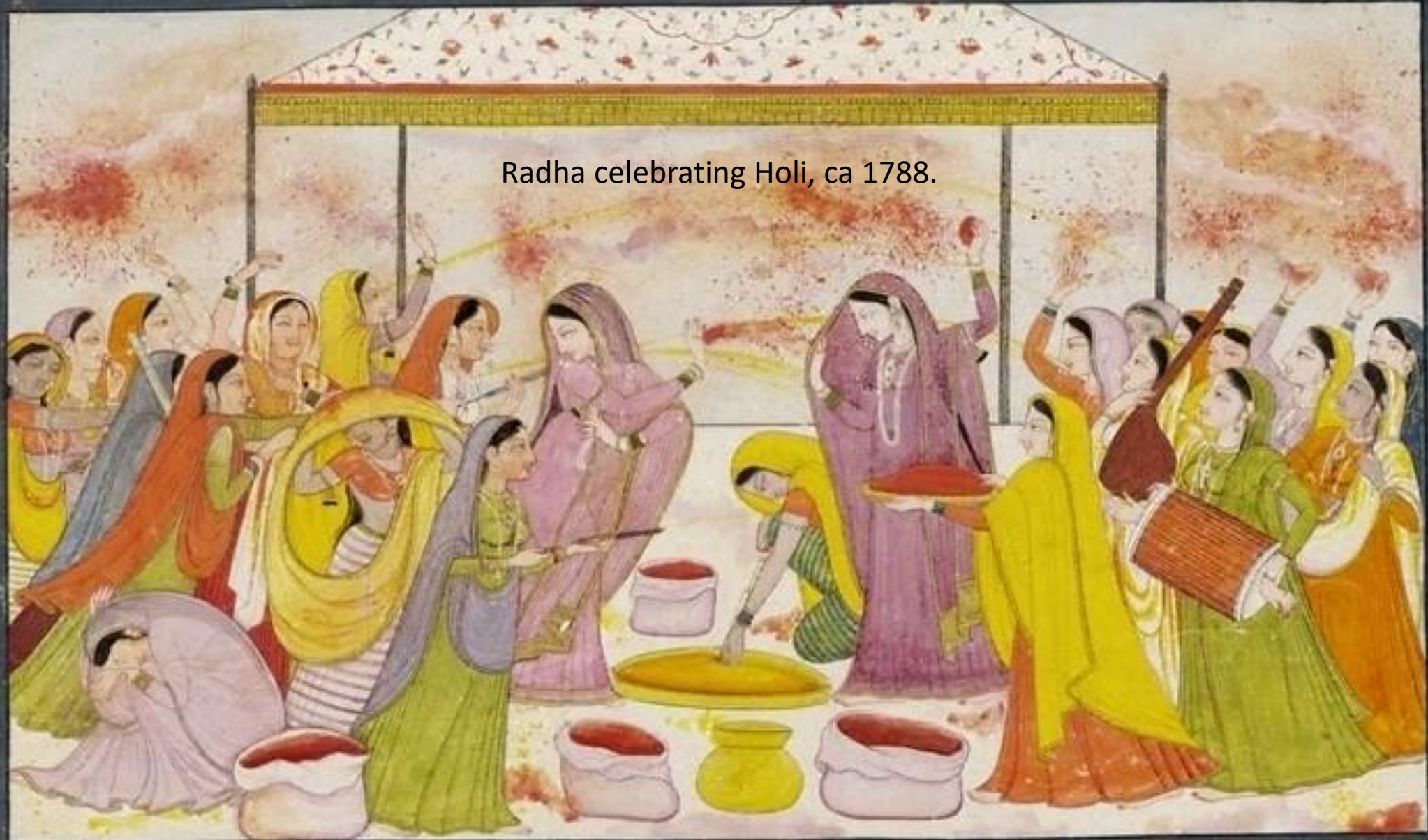


Figure 2. India, 16th–19th century, showing major centers of court painting in North and Central India

Radha celebrating Holi, ca 1788.



Sudama bows
at the glimpse
of Krishna's
golden palace
in Dwarka. ca
1775-1790
painting.





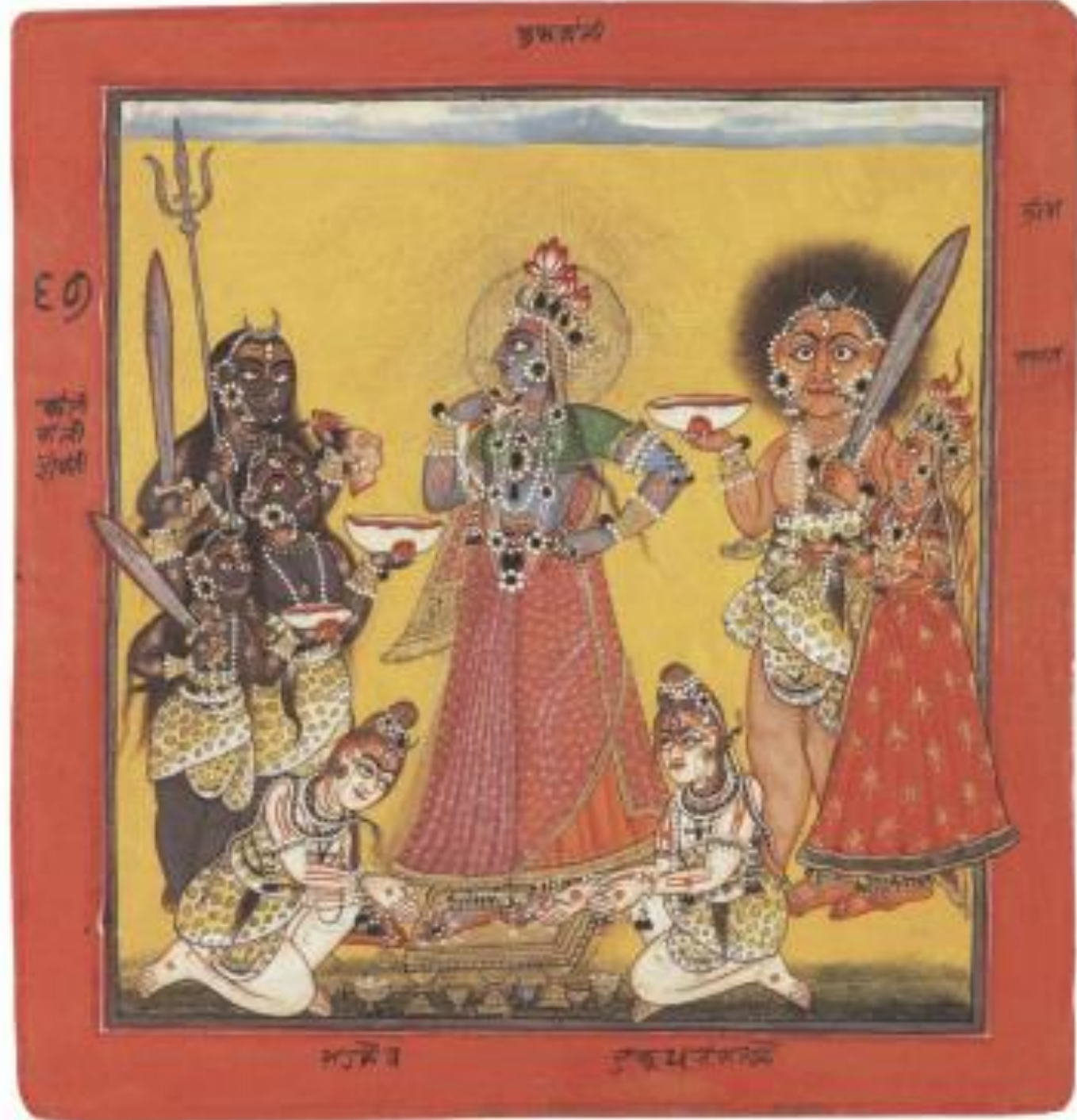
Figure 3. Page from a palm-leaf manuscript of the *Panca-vimsatisahasrika Prajnaparamita*, ca. 1090. Bengal school, Pala period. Ink and opaque watercolor on palm leaf. The Metropolitan Museum of Art, New York, purchase, Weld Fund, 1952 (52.93.2)



Figure 4. Detail of *Krishna Battles the Armies of the Demon Naraka*, page from a dispersed *Bhagavata Purana* (Ancient stories of Lord Vishnu), ca. 1520–30. Probably Delhi-Agra area. Chaurapanchasika style. See cat. no. 4.

THE WORSHIP OF THE DEVI AS THE
DARK GODDESS BHAI BHADRAKAL

Punjab Hills: Basohli, ca. 1660–70
Attributed to the Early Basohli Master
Page from a dispersed Tantric Devi series
Ink, opaque watercolor, gold, silver, and
beetle-wing case on paper
7 × 6½ in. (17.7 × 16.7 cm)
The Kronos Collections





A MARRIAGE PROCESSION IN A BAZAAR

Punjab Hills: Mandi, ca. 1645

Attributed to the Early Mandi Master

Ink and opaque watercolor on paper

12 $\frac{1}{2}$ × 19 $\frac{1}{4}$ in. (32 × 49 cm)

Collection of Howard Hodgkin

References: Glynn 1983, p. 53, fig. 13; Topsfield and Beach
1991, pp. 50–51, no. 25



MUDITA PARAKIYA NAYIKA

Punjab Hills: Basohli, ca. 1665

Attributed to the Early Basohli Master

Page from a dispersed *Rasamanjari* (Essence of the experience of delight)

Ink, opaque watercolor, gold, and beetle-wing case on paper

9 1/8 x 13 1/8 in. (23.9 x 33.5 cm)

San Diego Museum of Art

Edwin Binney 3rd Collection (1990:1039)



**KING DASHARATHA AND HIS ROYAL
RETINUE PROCEED TO RAMA'S WEDDING**

Punjab Hills: Bahu (Jammu), ca. 1680–90

Perhaps by Devidasa of Nurpur

Page from the dispersed "Shangri" *Ramayana*
(Story of King Rama)

Ink and opaque watercolor on paper

8 1/2 × 12 1/2 in. (22.2 × 31.8 cm)

The Metropolitan Museum of Art, New York
Purchase, The Dillon Fund, Evelyn Krases Kossak and
Anonymous Gifts, 1994 (1994.310)

SHIVA AND PARVATI PLAYING CHAUPAR

Punjab Hills: Basohli, dated 1694–95

Devidasa of Nurpur

Page from a dispersed *Rasamanjari* (Essence of the
experience of delight)

Ink, opaque watercolor, silver, and gold on paper
6½ × 11 in. (17 × 28 cm)

The Metropolitan Museum of Art, New York
Gift of Dr. J. C. Burnett, 1957 (57.183.2)

Reference: Archer 1973, vol. 1, p. 46





THE GODDESS KALI SLAYING DEMONS

Punjab Hills: Mandi, ca. 1710
Attributed to the Mandi Master
Ink, opaque watercolor, and gold on paper
8 1/2 x 11 1/4 in. (20.6 x 28.6 cm)
Collection of Dr. Alvin O. Bellak

Reference: Kramrisch 1986, pp. 124, 183, no. 114, ill.

MAHARAJA SIDH SEN RECEIVING
AN EMBASSY

Punjab Hills: Mandi, ca. 1700–1710

The Mandi Master

Ink and opaque watercolor on paper

14 1/2 × 10 1/2 in. (37 × 27 cm)

The Metropolitan Museum of Art, New York
Purchase, Florence and Herbert Irving Gift and
Rogers Fund, 1995 (1995.39)



भृगुवन्दनकृतमरमा



THE DEMON PRALAMBA CARRIES OFF BALARAMA

Punjab Hills: Mankot, ca. 1725

Page from a dispersed *Bhagavata Purana* (Ancient stories
of Lord Vishnu)

Ink, opaque watercolor, and gold on paper

11 1/8 x 8 1/8 in. (28.9 x 21.3 cm)

Collection of Ronnie and Walter Eisenberg

KRISHNA SWALLOWS THE FOREST FIRE

Punjab Hills: Basohli, ca. 1730

Page from a dispersed *Bhagavata Purana* (?)

Ink and opaque watercolor on paper

10 × 8 in. (25.4 × 20.3 cm)

Arthur M. Sackler Museum, Harvard University

Art Museums, Cambridge

Gift of Suzanne and Frederic Weinstein in memory of
Eleanor Dodge Barton and Marjorie R. Hubbard (1991.177)





RAJA BALWANT SINGH OF JASROTA DOES
HOMAGE TO KRISHNA AND RADHA

Punjab Hills: Jasrota, ca. 1750

Attributed to Nainsukh of Guler

Ink, opaque watercolor, gold, and silver on paper

7 1/8 x 6 1/8 in. (19.6 x 15.4 cm)

The Metropolitan Museum of Art, New York

Rogers Fund, 1994 (1994.377)

KRISHNA STEALS THE BUTTER

Punjab Hills: Basohli (?), ca. 1765
Attributed to Nainsukh of Guler
Ink and opaque watercolor on paper
7 7/8 x 11 in. (18 x 28 cm)
The Kronos Collections





RADHA PINING IN THE WILDERNESS

Punjab Hills: Kangra, ca. 1780

Page from a dispersed *Gita Govinda* (Song of the herdsmen)

Ink and opaque watercolor on paper

6 1/2 x 10 1/2 in. (16.5 x 26.6 cm)

Collection of Anita Spertus

KRISHNA WOOS RADHA

Punjab Hills: Kangra, ca. 1780

Page from a dispersed *Gita Govinda* (Song of the herdsman)

Ink and opaque watercolor on paper

6 1/2 x 10 1/2 in. (17 x 27.3 cm)

The Kronos Collections

Reference: Archer 1973, vol. 1, p. 292, no. 33(iv), and
vol. 2, p. 207, ill.





THE VILLAGE BEAUTY

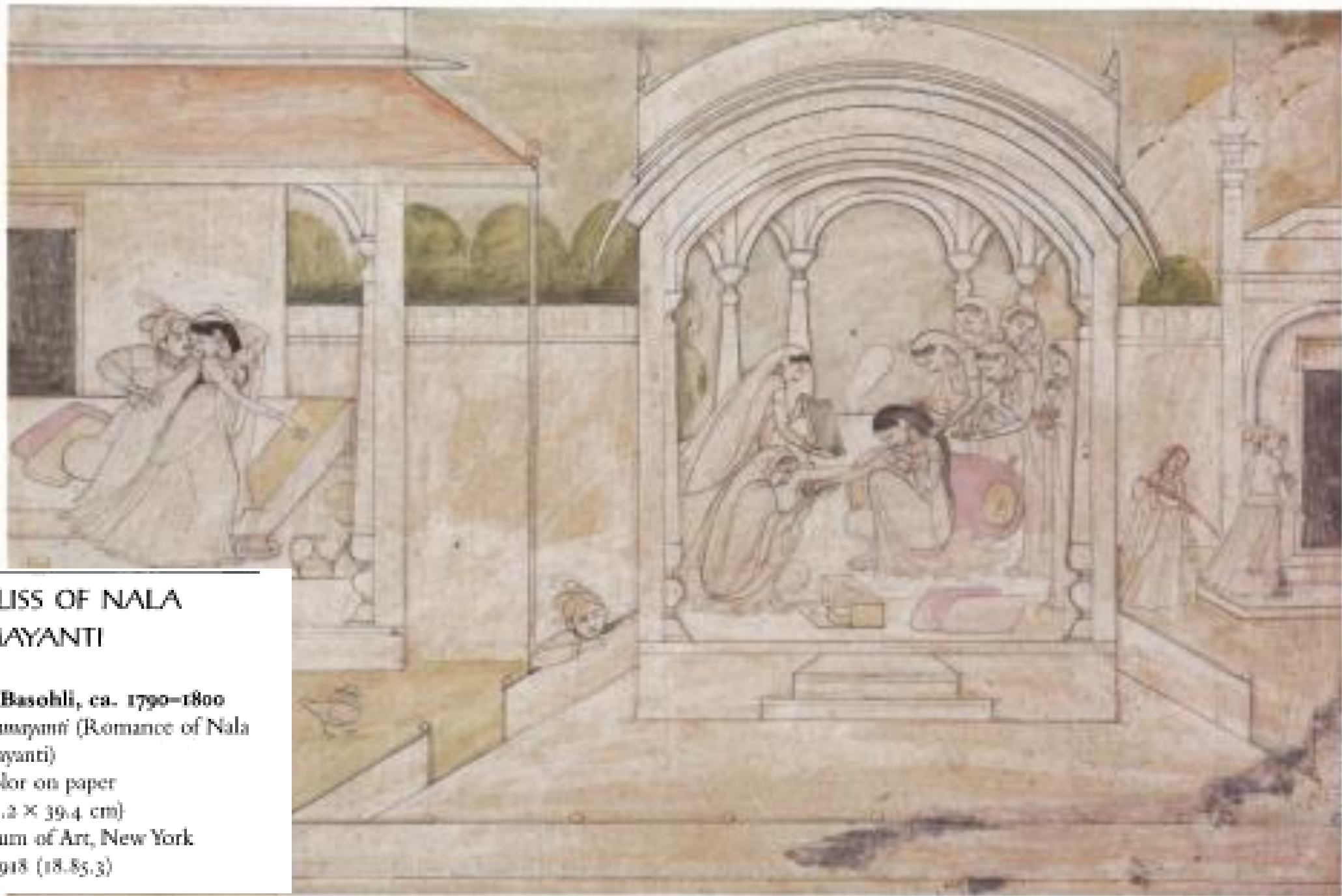
Punjab Hills: Kangra, 1780

Page from the dispersed *Bihari Sat Sai* (Seven hundred verses)

Ink, opaque watercolor, and gold on paper
7 1/2 x 5 1/2 in. (19 x 13 cm)

The Kronos Collections

Reference: Archer 1973, vol. 1, p. 296, no. 39(i), and
vol. 2, p. 214, ill.



THE MARITAL BLISS OF NALA
AND DAMAYANTI

Punjab Hills: Kangra or Basohli, ca. 1790–1800
Page from a dispersed *Nala-Damayanti* (Romance of Nala
and Damayanti)

Ink and watercolor on paper
11 1/2 × 13 1/2 in. (29.2 × 39.4 cm)

The Metropolitan Museum of Art, New York
Rogers Fund, 1918 (18.85.3)



Mangala, the planet Mars, holding mace and water-pot and unusually riding a tiger. By a Mankot artist, c.1700-20. 83 by 131 mm; page 107 by 155 mm. Add.Or.4318, acquired 1986. noc

Mangala wears a lotus-topped crown, a sprigged dhoti, and a muslin dupatta with flowered ends, and rides facing left on a snarling orange and white tiger. The ground is a dark red, with a narrow band of cloud-streaked sky at the top and another of green at the bottom; the latter is lightly applied over the dark red ground, and is relieved by clumps of white daisies. Inscribed above in white takri characters is the name Magala and on the verso is a verse detailing the consequences good or evil of seeing the planet, indicating the painting comes from a dream manual. The iconography is unusual, since Mangala normally rides a goat. The composition is typical of early Pahari painting with the subject silhouetted against a coloured ground with flowers below and a sky above, but without any indication of space or spatial recession.

Rama and
Laksmana are
pinned by
serpentine
arrows. By a
Pahari artist
from Bahu or
Kulu, from the
Shangri
Ramayana,
Style III, circa
1700-10. 186
by 290 mm;
page 215 x 316
mm.
Add.Or.5696,
acquired 2010.





Raja Shamsher Sen of Mandi (reg. 1727-81) enjoying a smoke. By a Mandi artist, 1760-70. 180 by 207 mm. Add.Or.5600, acquired 2006. From the collection of W.G. and Mildred Archer (1967, no. 30). noc

Raja Shamsher Sen of Mandi is kneeling on a terrace and much enjoying the fragrant smoke from a hookah. The artist shows the tobacco smoke rising from the hookah's burning pan before some is drawn down and through the rosewater in the body of the hookah and then emerging from the raja's mouth. He is accompanied by a young attendant waving a white cloth

The marriage ceremony of Vasudeva and Devaki.

Illustration to the Bhagavata Purana. By a Guler artist at Basohli, possibly Fattu son of Manaku, c. 1760.





Radha makes love to Krishna in a grove. An illustration to the *Rasikapriya* of Keshav Das. Kangra, c. 1820. Attributed to Purkhu and his school. 248 by 151 mm; page 272 by 177 mm. Add.Or.26, acquired 1955 (Falk and Archer 1981, no. 548).

